

Meyer Color Sorter
K Series

**EXPERT LEVEL FOR
MULTI-USAGE SORTING**

- Customized AI Nuts Identification Algorithm
- Sniper System
- Intelligent Dust Sucking System
- Crash-prevented System
- Transmission System 3.0
- Anti-pollution Structure Design
- Color & Shape Sorting
- PID Position & Control System(optional)



Nut Sorting Solutions

Hazelnut



accepts



discolored kernel

Macadamia nut



accepts



rotten nut

Almond



accepts



discolored kernel

Apricot kernel



accepts



peeled kernel

Pistachio



accepts



discolored kernel

Walnut



accepts



discolored kernel

Pine nut



accepts



discolored kernel

Pecan



accepts



rotten pecan



■ TECHNICAL SPECIFICATIONS

| Name | Model | Ejectors | Power (kW) | Voltage (V) | Air pressure (Mpa) | Air Consumption (m³/min) | Weight (kg) | Dimension (L*W*H)(mm) |
|------|------------|----------|------------|---------------|--------------------|--------------------------|-------------|-----------------------|
| K | 6SXZ-60K3 | 60 | 1.5 | 180~240V 50Hz | 0.6~0.8 | <1.5 | 1000 | 3890×1330×2350 |
| | 6SXZ-120K3 | 120 | 2.0 | 180~240V 50Hz | 0.6~0.8 | <2.0 | 1200 | 3890×1730×2350 |
| | 6SXZ-240K3 | 240 | 3.0 | 180~240V 50Hz | 0.6~0.8 | <3.0 | 1600 | 3890×2260×2350 |

■ CONFIGURATION

| ITEM | | | K |
|-----------------------------------|-----------------------------------|---|-------|
| Performance | Key Components | 15-inch LCD screen | ● |
| | | Micron-sized superior HD color sensor | ● |
| | | Compound lighting system | - |
| | | Crash-prevented maglev ejector | ● |
| | | New prism spectroscopic imaging technology | - |
| | Exclusive Color Sorting Solutions | Targeted positioning | ● |
| | | Gentle removal | ● |
| | | Shape sorting | ★★★★★ |
| | Impurity Removal | Shell & kernel separation | - |
| | | Discolored impurities (plastics, stones, dead insects, glass) | ★★★★★ |
| | Service Life | Patented maglev ejector | ★★★★★ |
| | | LED | ★★★★★ |
| | Air Circuit System | Enhanced point-to-point dust sucking system | ● |
| | Machine Protection | Input protection cover | - |
| | | Remote separation chamber protection | - |
| Worry-free transmission structure | | ● | |
| Waterproof and dustproof IP65 | | ● | |
| Intelligence | Intelligent System | Extra-simplified interface | ● |
| | | Sorter care | ● |
| | | Remote control | ● |
| | | Remote commissioning | ● |
| | | Auto-backup | ● |

Parameters above are tested on the environment of 25 C and 2% impurities rate and may change in different conditions.

☆: Function strength, ●: Standard, ○: Selection, -: No

Meyer Color Sorter
KI Series

BETTER INFRARED TECHNOLOGY
AND LOWER BREAKAGE RATE

- Customized AI Nuts Identification Algorithm
- Sniper System
- Intelligent Dust Sucking System
- Easy to Clean
- Crash-prevented System
- Transmission System 3.0
- PID Position & Control System(optional)



Nut Sorting Solutions

Walnut



accepts



rotten walnut



discolored kernel



shell

Apricot kernel



accepts



peeled kernel



discolored kernel



shell

Pistachio



accepts



discolored kernel



accepts

Hazelnut



shell

Almond



accepts



dark almond



accepts

Pine nut



discolored kernel

Impurity



glass



stone



metal



ceramics



■ TECHNICAL SPECIFICATIONS

| Name | Model | Ejectors | Power (kW) | Voltage (V) | Air pressure (Mpa) | Air Consumption (m ³ /min) | Weight (kg) | Dimension (L*W*H)(mm) |
|------|-------------|----------|------------|---------------|--------------------|---------------------------------------|-------------|-----------------------|
| KI | 6SXZ-60KI3 | 60 | 2.7 | 180~240V 50Hz | 0.6~0.8 | <1.5 | 993 | 3865×1330×2350 |
| | 6SXZ-120KI3 | 120 | 3.8 | 180~240V 50Hz | 0.6~0.8 | <2.0 | 1260 | 3865×1730×2350 |
| | 6SXZ-240KI3 | 240 | 6.0 | 180~240V 50Hz | 0.6~0.8 | <3.0 | 1700 | 3865×2260×2350 |

■ CONFIGURATION

| ITEM | | KI | |
|-----------------------------------|-----------------------------------|---|-------|
| Performance | Key Components | 15-inch LCD screen | ● |
| | | Micron-sized superior HD color sensor | ● |
| | | Compound lighting system | - |
| | | Crash-prevented maglev ejector | ● |
| | | New prism spectroscopic imaging technology | ● |
| | Exclusive Color Sorting Solutions | Targeted positioning | ● |
| | | Gentle removal | ● |
| | | Shape sorting | ★★★★★ |
| | Impurity Removal | Shell & kernel separation | ★★★★★ |
| | | Discolored impurities (plastics, stones, dead insects, glass) | ★★★★★ |
| | Service Life | Patented maglev ejector | ★★★★★ |
| | | LED | ★★★★★ |
| | Air Circuit System | Enhanced point-to-point dust sucking system | ● |
| | Machine Protection | Input protection cover | - |
| | | Remote separation chamber protection | ● |
| Worry-free transmission structure | | ● | |
| Waterproof and dustproof IP65 | | - | |
| Intelligence | Intelligent System | Extra-simplified interface | ● |
| | | Sorter care | ● |
| | | Remote control | ● |
| | | Remote commissioning | ● |
| | | Auto-backup | ● |

Parameters above are tested on the environment of 25 °C and 2% impurities rate and may change in different conditions.

☆: Function strength, ●: Standard, ○: Selection, -: No

M MEYER INTELLIGENT SORTING SOLUTION

Nuts are healthy snack options. They are rich in nutrients like protein, oil, minerals and vitamins, which have positive effects on human growth by enhancing physical fitness and preventing diseases. High quality nuts without the bad and the damaged are much welcomed in the market, so more stringent requirements are put forward for Meyer color sorters.

Meyer, working deep in color sorting for nearly 30 years, always provides intelligent and professional sorting solutions for customers. From seeds to final products, Meyer intelligent sorting solutions play a key role in the whole food production process. Over 20 years' innovation is to improve the efficiency and create value for you with scientific and efficient solutions. Meyer intelligent sorting solution has been widely applied to various food production lines, serving over 50,000 customers worldwide.



Almond



accepts



dark almond



peeled almond



shape difference



rotten almond

Apricot kernel



accepts



peeled kernel



broken kernel



rotten kernel

Hazelnut



accepts



peeled kernel



rotten kernel



shell

Pistachio



accepts



shell



discolored kernel

Pine nut



accepts



shell



discolored kernel

Pecan



accepts



broken pecan



rotten pecan

Walnut



accepts



shell



discolored kernel

Macadamia nut



accepts



rotten nut



shape difference

M BRAND NEW MEYER COLOR SORTER DEFINES A NEW STANDARD FOR INTELLIGENT SORTING

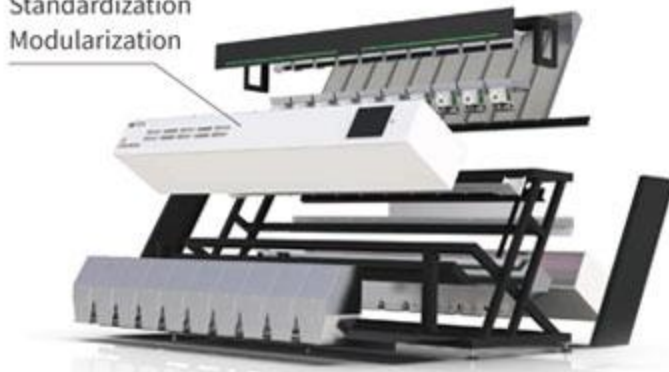
PART 1

MACHINE STRUCTURE IS HIGHLY STABLE AND RELIABLE

Engineering Design
Manufactured by Smart Factory
Standardized Production

IMPROVE RELIABILITY, ENGINEERING DESIGN IS THE PRIORITY

Standardization
Modularization



More than **70%**
parts realize
intelligent production

Parts general rate
increases to
70%

IMPLEMENTING RELIABILITY, INTELLIGENT MANUFACTURING IS THE KEY



PART 2

OPERATION PROCESS IS HIGHLY STABLE AND RELIABLE

The new digital electrical topology structure controls the sudden failure of the core components from the source to ensure the stable and reliable operation of the production line.

THE NEW DIGITAL ELECTRICAL TOPOLOGY STRUCTURE



Reduce redundant control modules of traditional color sorters by **45%**

High integration, strong anti-interference ability

Provide a standardized PLC interface, which can be connected to the factory's centralized electronic control system to help the digital operation of the production line

INNOVATIVE REMOTE CONTACTLESS SERVICE



Remote Control

Users can adjust color sorting parameters, switch color sorting solutions, and grasp operating indicators such as output and processing accuracy online



Smart Backup

The user can back up the ideal sorting parameters and solutions to the cloud at any time, so that can be called in time in subsequent processing



Smart Checkup

Real-time monitoring and correction of signals, lights and the operation effect of key components to help equipment run stably



Remote Debugging

When the effect is abnormal, you can seek online service experts for remote debugging, so that the equipment can be restored to a good running state in

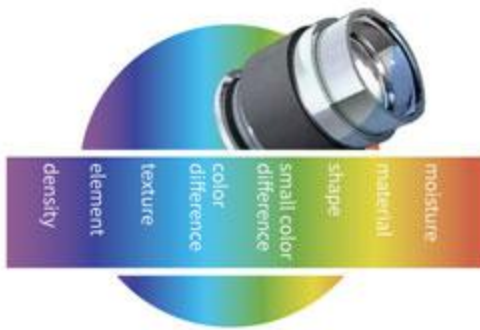
THREE ADVANTAGES

PART 3

SORTING EFFECT IS HIGHLY STABLE AND RELIABLE

Reliability with independent technological innovation makes the performance advantages of high accuracy, low rejection ratio and large throughput stable, and the value of Meyer color sorter has been greatly improved.

MEYER CORE TECHNOLOGIES

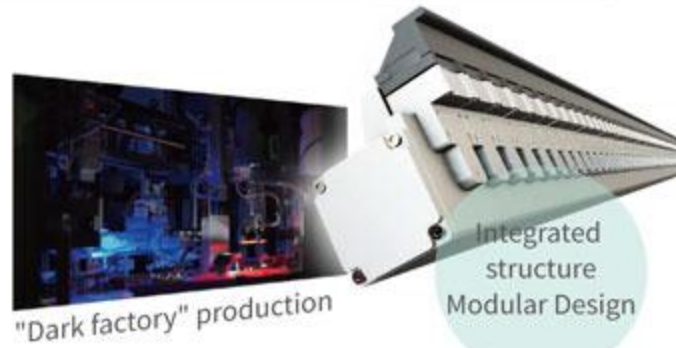


Meyer Multispectrum Confocal System

Meyer multispectrum confocal system provides multi-dimensional sorting and detection solutions such as color, shape, texture, material, etc. to meet users' differentiated processing needs.

Meyer Maglev Ejector 3.0

Ultra-high-speed response, shorter start time of ejector for higher accuracy
Millisecond-level start and stop, gas supply and cutoff completely, resulting in greater output and lower loss



The minimum recognition area can reach 0.0004mm²

Meyer Ultra HD Imaging System

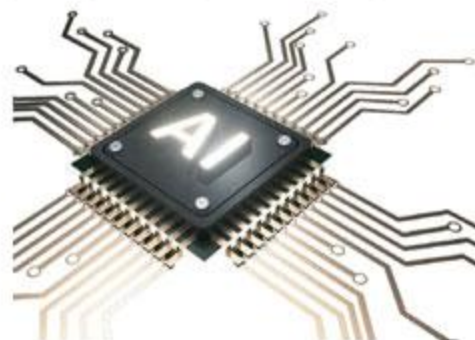
Low-distortion camera lens, with ultra-high-definition resolution, ensure clearer identification of materials

Large sample library for the sorting industry

Meyer Deep Learning Technology

Complex defects detect in complex scenarios and meet customers' changing sorting needs

| | | |
|--|--|---|
| Data Advantage Nearly 10,000 connected devices worldwide | Platform Advantage Key software enterprises in national planning | Innovation Advantage Breaking through the industry bottleneck of small target detection |
|--|--|---|



MORE INTELLIGENT TECHNOLOGIES



Sniper system



Smart vacuum device



Smart alarm



Extremely simple operation



Spectrum confocal system



Infrared image system



PID system

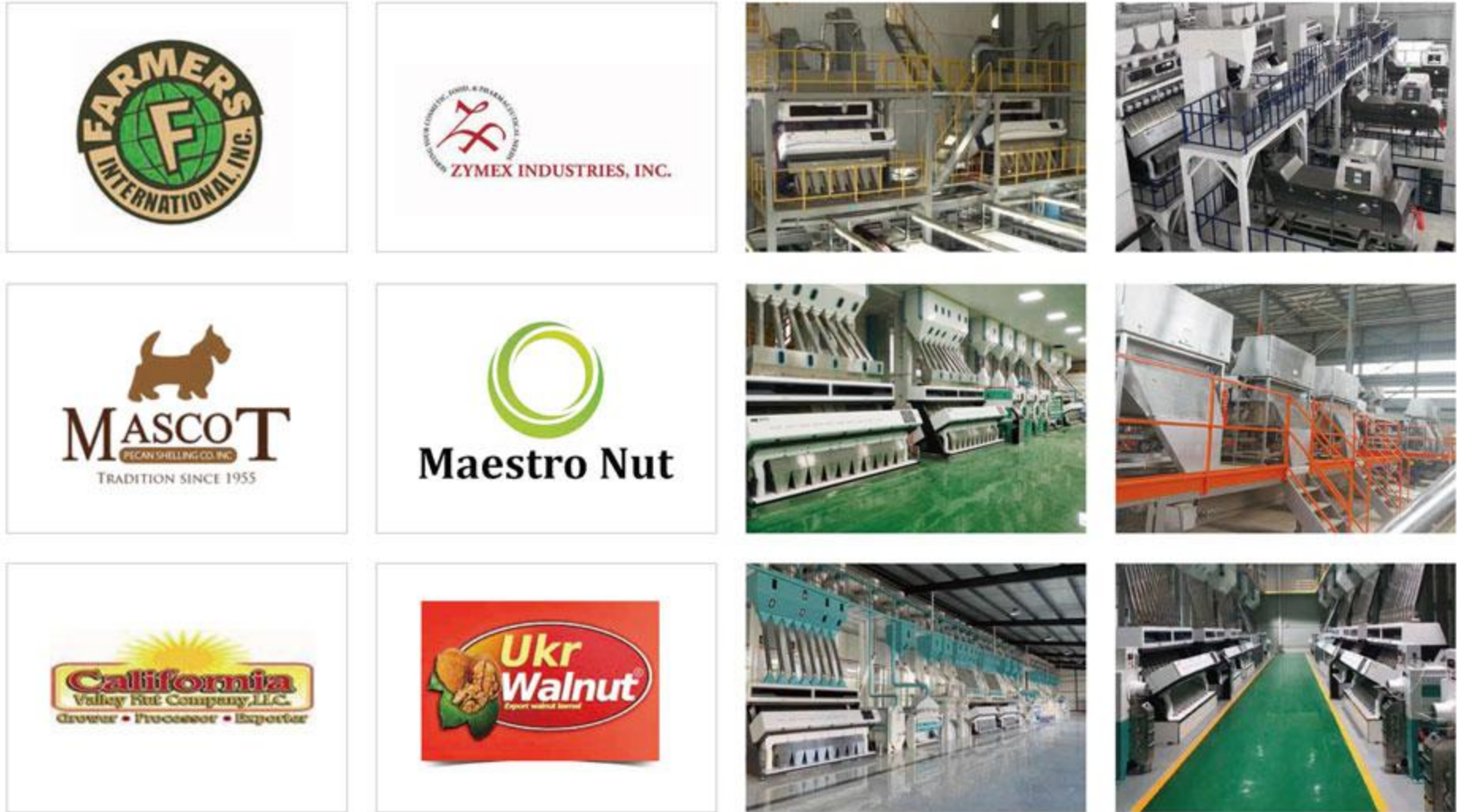


Shape sorting



Intelligent Anti-shatter

MW CUSTOMER PRODUCTION LINES



THE 1ST SMART FACTORY IN THE INDUSTRY

STANDARDIZATION MODULARIZATION INTELLIGENTIZATION DIGITALIZATION



Sheet metal flexible processing production line



Color sorter final assembly line



Unmanned maglev ejector production line



Chute assembly robot workstation



Automatic circuit board SMT production line



Automatic frame powder spraying production line

- Over 20 automatic intelligent production lines and unmanned core component workshops
- World-leading machining equipment ensure high consistency and precision of parts
- Advanced production technology and strict debugging ensure the stable performance of core components
- The only high-standard intelligent painting workshop in the industry makes Meyer color sorter more corrosion-resistant and more environment-friendly
- The only final assembly line in the industry, with the CNC system automatically monitoring the whole process, boosts production's efficiency
- Making products to the best, whether 1 or 10,000 sets, always with the consistent quality.

